

A silver paperclip is attached to the top left corner of the white paper.

Donegal School District

Fall 2011-2012

Partial Realignment

Grades 1-5



Donegal Elementary Team





Welcome & Introductions

➔ Elementary Administrators

– Donegal Springs Elementary:

- Miss Deborah Ault & Mrs. Dana Blair



– Riverview Elementary:

- Mrs. Judy Haugh,
Mr. Andrew Sparmblack, & Mr. Ross Hopple



– Maytown Elementary: Mr. Ross Hopple

– Donegal Kindergarten Center:

- Mrs. Dana Blair

➔ Introduction of other district personnel



Overview of 2011-12 Changes

➔ Grade Level Moves

- DSE Grade 5 attends RV.
- RV Grade 1 & Grade 2 attend DSE.
- MT Grade 1 attends DSE & classrooms in 1862 building move into 1928 building.
- One MT Grade 4 relocated to RV to balance class sizes. Two remain at MT.

➔ K Center remains as is for 2011-2012.





Overview of 2011-12 Changes

➔ Elementary Student Day

– Donegal Springs, Maytown, & Riverview

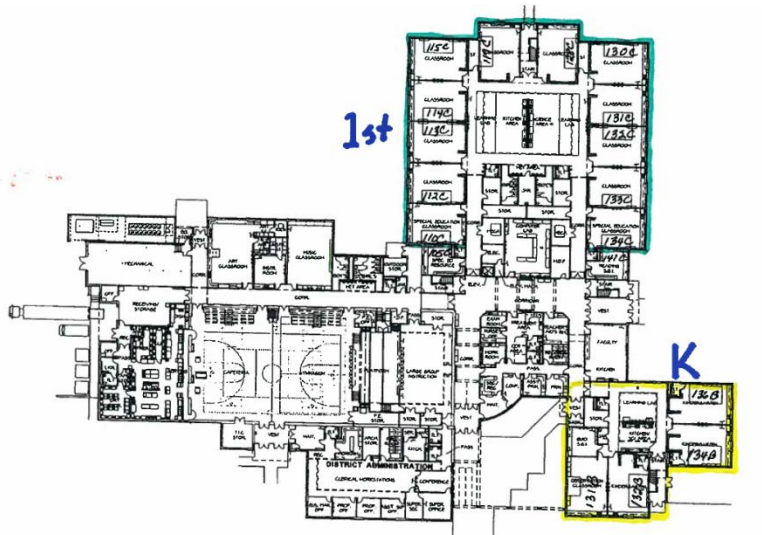
- Doors open at 8:45 a.m.
- Student day- 9:00 a.m. – 3:30 p.m.

➔ Kindergarten Center

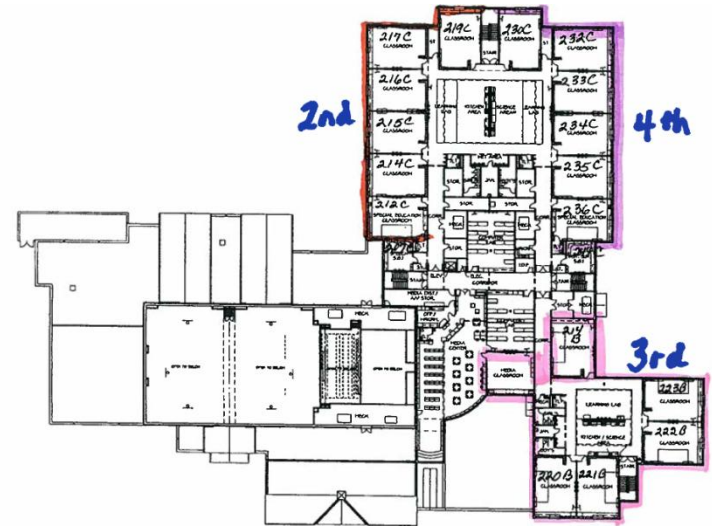
- A.M.- Doors open at 8:45 a.m.
Student day- 9:00 a.m. – 11:45 a.m.
- P.M.- Doors open at 12:15 p.m.
Student day- 12:30 p.m. – 3:15 p.m.



Donegal Springs Elementary: 2011-2012

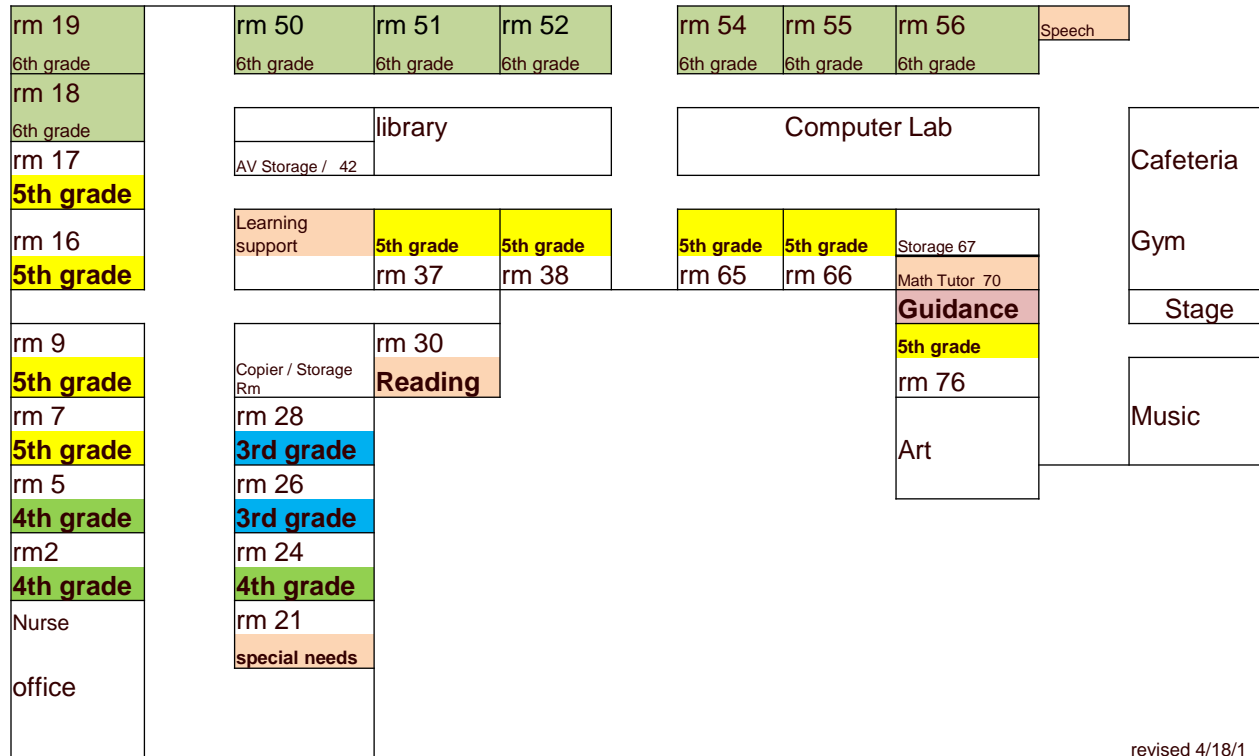


DONEGAL SPRINGS ELEMENTARY SCHOOL AND DISTRICT ADMINISTRATION
FIRST FLOOR PLAN



DONEGAL SPRINGS ELEMENTARY SCHOOL AND DISTRICT ADMINISTRATION
SECOND FLOOR PLAN

Riverview Elementary: 2011-2012



revised 4/18/1



Projected Deficit
\$2,397,296



Fiscal Rationale

Why is there a deficit?

- ➔ **Poor Economy:**
 - Unemployment : reduced wage tax
 - Real Estate Market : fewer sales = less transfer tax
 - Banking Crisis: reduced interest income
- ➔ **State Fiscal Crisis:**
 - \$4 billion deficit = \$1.5 billion in cuts to education
 - Federal stimulus dollars used to “fill the gap” eliminated
- ➔ **Mandates:**
 - Charter Schools: \$990,000 projected costs
 - PSERS: 4% increase
 - Act 1: limits ability to raise taxes to offset costs

How is the realignment fiscally responsible?

- ➔ **Eliminates duplication of resources**
- ➔ **Reduces licensing costs**
- ➔ **Maintains equitable class sizes with fewer teachers**
- ➔ **Reduces operational costs (utilities, maintenance, food service)**



Transitions

2011-2012





Elementary Orientations

➔ Kindergarten

– DSE Literacy K

- August 22, 2011
- 5:00 p.m. – 6:30 p.m.

– Kindergarten Center

- August 22, 2011
- A.M. Session- 6:00 p.m.
- P.M. Session- 7:00 p.m.

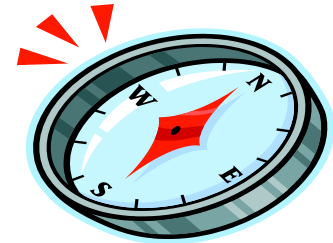




Elementary Orientations

➔ First Grade- DSE

- Wednesday, August 24, 2011
- 6:00 p.m. – 8:00 p.m.



➔ New Student Orientation, Grades 2-5

- DSE: Thursday, August 18, 2011, 6:00 p.m.
and Monday, August 22, 2:00 p.m.
- RV & MT: Thursday, August 25, 2011,
6:00 p.m.



Elementary Sneak Peek



- ➔ DSE, MT, and RV
 - Thursday, August 25, 2011
 - 3:00 p.m. – 6:00 p.m.
 - Students with parents explore the building, find classroom, locate important places such as the cafeteria



Elementary Back-to-School Night

- ➔ DSE, MT, RV
- ➔ Grades 2-5
- ➔ Wednesday, August 31, 2011
- ➔ 4:00 p.m. to 6:00 p.m.
- ➔ Meet the teacher, learn about grade-level curriculum
- ➔ Eat in the cafeteria





Donegal Springs Elementary

➔ Grade 4 Celebration

- Classmate signatures T-shirts
- End-of-year picnic
- Recognition/celebration at assembly





Maytown Elementary

- ➔ **During 2011-12, planning for the celebration of Maytown Elementary School history**
- ➔ **If any parents are interested in participating in the planning, please sign the volunteer sheet in the lobby.**





DSD Parent Organization

- ➔ Purpose: To support DSD students by fundraising, coordinating volunteers, and organizing family events.
- ➔ Executive Committee
- ➔ Elementary Councils
- ➔ Subcommittees: fundraising, nominating, family events, volunteers





Questions & Answers

